

FREEDOM WITHOUT COMPROMISE

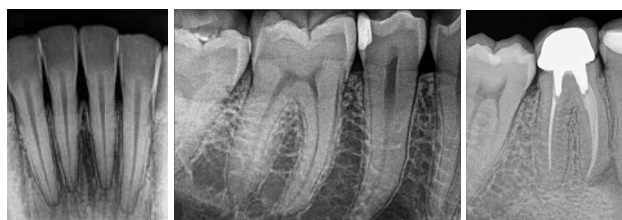
 AirBridge



AirBridge

AirBridge

SAME HIGH PERFORMANCE NOW WIRELESS



WITH WIRELESS

Wireless Convenience:

Work seamlessly like using a wireless mouse no cables, no clutter.

No More Wired Hassles:

Eliminate restrictions, improve workflow, and enhance patient experience.

One IOS, Multi Chairs:

Easily move between operatories & maximize your investment.

Long-Lasting Rechargeable Battery:

Built-in battery supports repeated use with reliable performance



SPECIFICATIONS

Product	Wireless Range	Upto 10 Meter
	Operation Voltage	3.7V
	Charging Voltage	5V 2A
	Size	Approx. 48 × 140 × 35.5mm
	Weight	Approx. 88.5g
Battery	Type	Lithium-ion battery
	Voltage	DC 3.7V
	Size	Approx. 53.7 × 14.5 × 14.5mm
	Weight	Approx. 20.8g

* The specifications are subject to change without prior notice.